

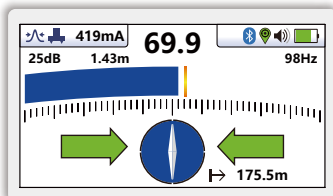


# vLoc3-DM DEFECT MAPPER

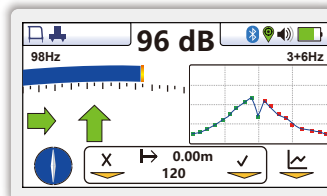
- Real-time on-screen mapping and data review
- Identify the location of coating defects
- Color-coded EM distortion warnings
- Low-frequency 3Hz and 4Hz current mapping
- Internal Bluetooth and GPS
- Internal data logging

The **vLoc3-DM** is used to precisely locate pipelines and assist in evaluating pipe coating defects. The system can be used on either transmission or distribution pipes. A complete ACVG survey can be undertaken using the vLoc3-DM and plug-in A-frame. The display on the vLoc3-DM has been configured specifically for pipeline evaluation. Data can be graphed in real-time on the receiver while still on site. The walk back feature highlights the operator's position on the graph allowing them to return to a point of interest where further evaluation or an ACVG, A-frame survey can be undertaken.

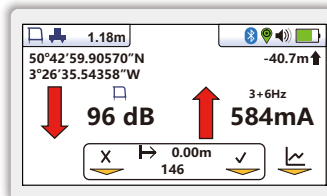
With two sets of 3D antennas signal distortion is easily detected and displayed on the bright full-color display. In addition, the vLoc3-DM introduces new locate perspective screens of Vector Locate for fully automatic non-walk over locating, Transverse Graph showing both peak and null simultaneously providing an immediate measurement of signal distortion, and Plan View showing the relative orientation of the cable at any angle. Visual and mechanical vibration alerts can also be configured by the user providing warnings for shallow depth, overload, overhead cables, and excessive swinging.



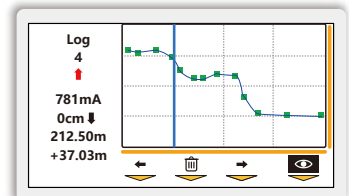
**Classic Locate Screen** - Used to locate the position of the pipeline, with the addition of surface distance to the last measurement and three color-coded distortion levels.



**A-Frame Screen** - The A-frame screen shows a peak locate screen, compass indicator, direction to a fault, a graph of fault magnitude and data logging options.



**Simultaneous Fault and Current Screen** - shows both A-Frame and Defect Mapper current readings.



**Review Screen** - to review points of the complete graph. Shows LF current, total survey distance, distance from the previous measurement.

Internal Bluetooth and GPS

**Alkaline and Li-ion Batteries**

- Alkaline - typically 12-hours of intermittent use
- Li-ion - typically 27-hours of intermittent use

**USB Data Port**

- Download data logs
- Update firmware
- Add/remove features

**Accessory Port (plug and play)**

- Remote Stethoscope Antenna
- A-Frame Fault & Holiday Locator
- Vehicle Charging Lead

**Antenna Array**

- Two Sets of Omni Directional Antennas, each comprising:
  - Two Compass antennas
  - Two Horizontal antennas
  - Two Vertical antennas

**Low Frequency Field Sensor**

When low frequency mapping is not required, the LF Sensor Foot can be removed



**Ultra Bright LCD**

- High visibility 4.3"/10cm LCD
- Auto backlight
- Details configured for pipeline evaluation

**Data Logging**

- 50 Million internal record storage
- GPS coordinates and data/time stamps
- Access data via the cloud
- Download data with MyLocator app

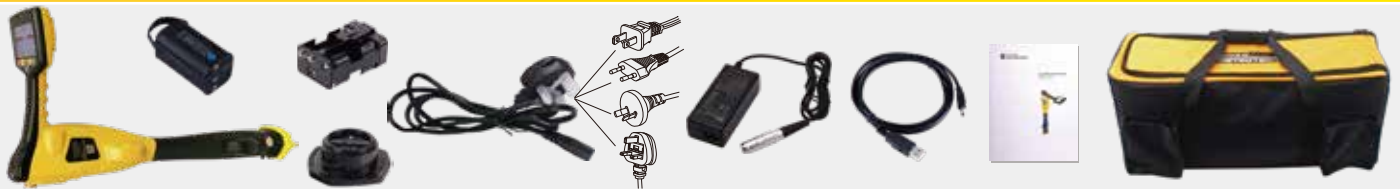
**Construction**

- Ergonomic and lightweight at 5.7 lbs. / 2.6 kg
- IP65
- High impact injection molded housing

Backed by Vivax-Metrotech's superior dealer network, customer service and service centers.

vLoc3-DM Receiver Specifications	
<b>Construction</b>	High impact thermoplastic (ABS) injection molded housing
<b>Weight &amp; Dimensions</b>	5.7lbs (2.6kg) / 12.3in(L) x 4.6in(W) x 30.8in(H) (312mm x 116mm x 783mm)
<b>Display</b>	4.3" / 10.9cm Transmissive 480 x 272 Pixel, 16-bit Color, High Visibility LCD
<b>Battery options</b>	Rechargeable custom Lithium-ion batteries with 100-240V AC mains charger Six x AA Alkaline batteries
<b>Battery life</b>	Lithium-ion – typically 27-hours intermittent use at 70°F (21°C) Alkaline – typically 12 hours intermittent use at 70°F (21°C)
<b>Operating frequencies</b>	Active: - Configurable frequencies from 98Hz to 200 kHz - Signal Direction (SD) - enhanced frequency giving direction of the outgoing transmitter current Passive: Power - 50Hz and 60Hz, Radio - 10kHz - 22.7kHz bandwidth Mapping: 3/6Hz and 4/8Hz
<b>Operating modes</b>	Defect Mapping, Defect Mapping A-Frame, Classic Locate (Bar graph), Transverse Graph Mode, Plan View (Omni Directional) Vector Locate (Lateral Position & Depth), Sonde Locate
<b>Data logging and transfer</b>	50 Million records - Records include depth, current, frequency, mode, gain setting, signal strength, GPS coordinate, date and time Download data from the receiver using the free MyLocator3 desktop app, save as csv, klm, shp, txt, xls, xlsx files
<b>Environmental</b>	IP65

## What's in the box



## Popular Accessories



Fault Locator



Vehicle Charging Lead



Sondes



Remote Antenna

## Compatible Transmitters



150-Watt Transmitter

The Loc-150Tx is designed to be powered from CP (Cathodic Protection) stations, AC or external power, eliminating the need for batteries.



25-Watt Transmitter

The Loc3-25Tx portable battery-powered transmitter is tailored for cathodic protected longline pipelines and gas distribution in city areas needing a low-frequency high output transmitter.

Local Vivax-Metrotech Distributor:

### Vivax-Metrotech Corporation

3251 Olcott Street, Santa Clara, CA 95054, USA

**T/Free: 1-800-446-3392**

**Tel: +1-408-734-3880**

www.vivax-metrotech.com

Tag us on social media @vivax\_metrotech



V1.5

Please visit our website for full product specifications.

www.vivax-metrotech.com | www.vxmt.com